



LONG ISLAND
Health
COLLABORATIVE

connecting you to better health

December 5, 2024
Quarterly Virtual Meeting

Welcome & Introductions

Thank you for joining us!

Please introduce yourself and tell the group what organization you represent.



Today's Meeting Agenda

Welcome & Introductions

LIHC Updates

- Poverty Simulation Recap
- 2025 CHNA/CHA Work Group Update

Featured Speaker: Elizabeth Cohn, RN, PhD, FAAN, *Vice President for Health Equity Research, Iris and Saul Katz Chair in Women's Health Research; Professor, Institute of Health System Science, Feinstein Institutes for Medical Research, Zucker School of Medicine*

LIHC Updates Continued

- Core Cluster Update
- LIHC Member Spotlight: American Cancer Society
- 2024 Community Champion Award
- Ongoing Engagement
- 2025 Virtual Quarterly Meetings

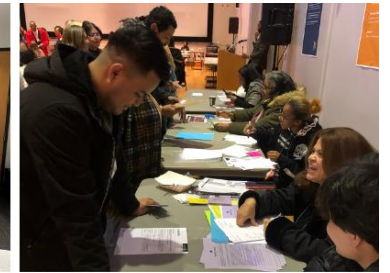
Discussion

Adjournment

LIHC Updates

Nov. 15 Poverty Simulation

Thank you to Nassau County DOH, Suffolk County DOH, Choice for All, Nassau Community College, all participants and volunteers!



LIHC Updates

2025 CHNA/CHA Workgroup Update

- **CBO Survey is live until Dec 31, 2024**
 - **CBO leaders: please take the survey before 12/31 if you have not already done so. *If you already took the survey, thank you!!***
 - Scan the QR code with your smartphone or visit <https://www.surveymonkey.com/r/LIHC-CBO2024>
 - Please help us distribute to all CBO leaders using the link, QR code, and flyer
 - More than one person from an organization can complete because each has a different perspective



LHC Updates

2025 CHNA/CHA Workgroup Update

- **New Prevention Agenda**
 - Timeline extended through February 2025; Implementation phase now begins on March 1 instead of January 1.
 - Work Group to review ongoing Community Health Assessment Survey (CHAS) to ensure it aligns with the new PA priorities; to launch in early 2025
- **Next 2025 CHNA/CHA Work Group meeting:**
Wednesday, December 11, 2024, at 1 PM via Zoom

Featured Presentation

Elizabeth Cohn, RN, PhD, FAAN

Vice President for Health Equity Research; Iris and Saul Katz Chair in Women's Health Research; Professor, Institute of Health System Science, Feinstein Institutes for Medical Research, Zucker School of Medicine



LIHC Updates

Core Clusters

- Updates from each group
- Next bi-monthly meetings in January to be scheduled
 - Mental Health
 - Chronic Disease
 - Cultural Competency/Health Literacy
- 2024 Clusters: feedback, discussion
- **What's next?**



LIHC Updates



What's Next: 2025 Project Update

- A project to demonstrate the power of collective impact
- Reflect on what the LIHC has accomplished, what we're currently doing, and how the LIHC should proceed to maintain its relevance and collective impact
- Goal: produce article for publication in a journal to inform the field and for all to take collective ownership
- **Discussion and poll**

LIHC Updates

LIHC Member Spotlight:



Julianne Roman, MPH, LMSSW
Associate Director, Community Partnerships

American Cancer Society on Long Island

For more information about any of these programs, please visit cancer.org or reach out to your ACS team representative!

Discovery

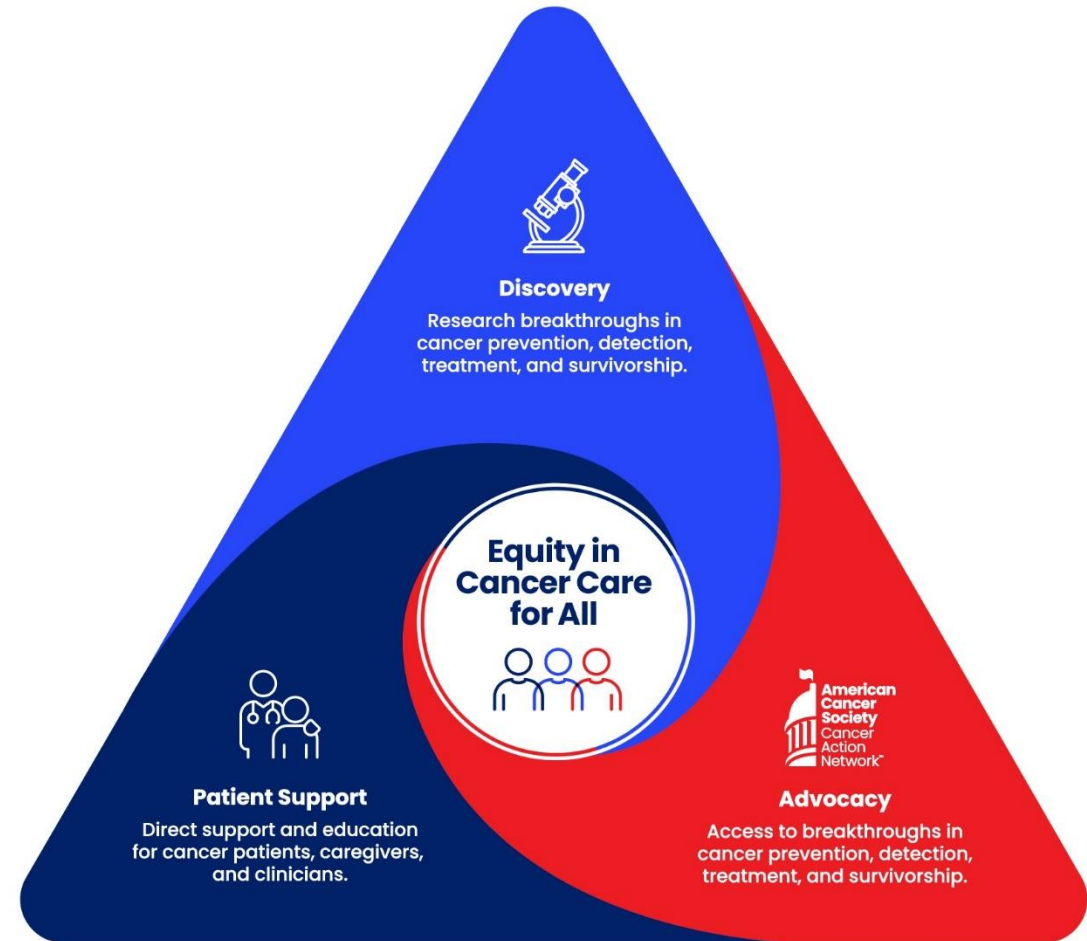
- [VOICES of Black Women](#) – study to better understand cancer and other health conditions among Black women.
- Over \$1.5M [awarded](#) to researchers on Long Island in 2024.

Advocacy

- Over 20 volunteers from Long Island
- Advocate for legislation such as funding for Cancer Services Program and the New York State Tobacco Cessation Program
- Expanded access to biomarker testing in New York State

Patient Support

- [24/7 Cancer Helpline](#) – call us at 1-800-227-2345
- [Hope Lodge](#) – free place to stay during treatment
- [Road to Recovery](#) – get a free ride to cancer treatment
- [ACS CARES](#) – get personalized information and resources that update
- Screening Intervention Projects – funded and unfunded opportunities for health systems to improve cancer screening rates
- Lodging & Transportation grants – funded opportunities for health systems to address barriers to care for patients with cancer
- Addressing Barriers to Care grant (ABC) – funded opportunity for community-based organizations addressing social determinants of health



LIHC Updates

***Congratulations to our 2024
Community Champion***

Linda Mermelstein, MD, MPH

*Associate Director, Office of Community Outreach and
Engagement, Stony Brook Cancer Center;
Former Chief Deputy Commissioner, Suffolk County
Department of Health*



Stony Brook **Cancer Center**



Ongoing Engagement

Community Health Assessment Survey Promotion

- English: <https://www.surveymonkey.com/r/LICHASENG>
- Spanish: <https://es.surveymonkey.com/r/LICHASESP>
- LIHC is still boosting links on social media
- Please distribute links, QR codes and/or paper copies at:
 - Digital newsletters
 - Outreach events
 - Social media, etc.
- All CHAS surveys, links, social media posts, and printable QR code signs are available in a Toolkit via [Google Drive](#)
- **IF YOU CANNOT ACCESS GOOGLE DRIVE**, please email boliveri@nshc.org to request the CHAS Toolkit materials directly via email

Ongoing Engagement

Collaborative Communications

- Bi-weekly email newsletter to 400+ contacts
- Submit your free events, resources, jobs, and more to boliveri@nshc.org
- [Subscribe to Collaborative Communications](#)

LIHC Events Calendar

- Submit your events [here](#)

Walk with a Doc / Walk *Safe* with a Doc

- Opportunity to partner
- LIHC handles coordination, just asks for your efforts to co-promote

2025 LIHC Meetings

- Virtual quarterly meetings to continue for the time being, registration links on [LIHC website](#)
 - Thursday, March 27, 2025
 - Thursday, June 26, 2025
 - Thursday, September 25, 2025
 - Thursday, December 4, 2025

Discussion



Adjournment

Thank you!

www.lihealthcollab.org

(631) 963-4167

lihc@nshc.org

